

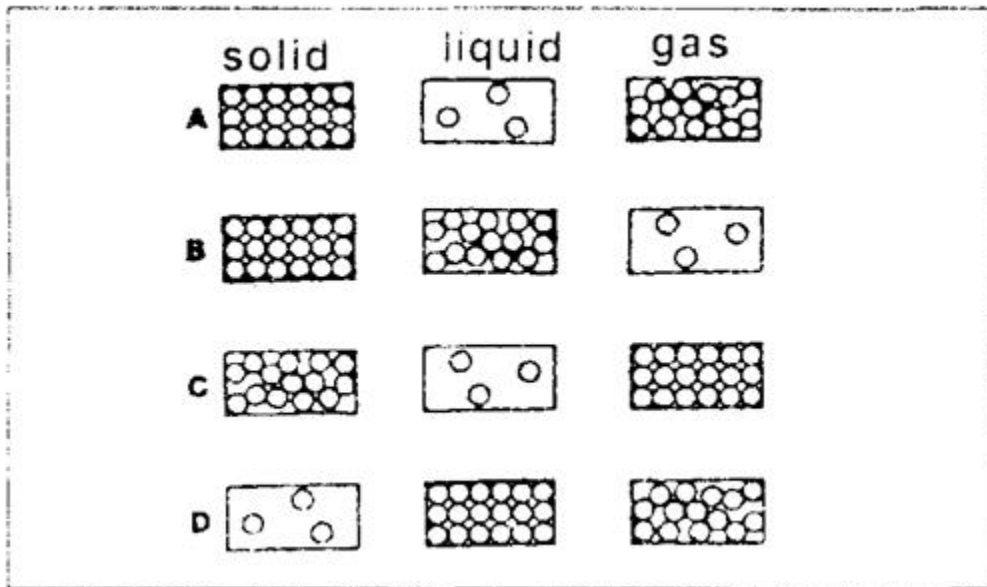
Name: \_\_\_\_\_

Date: \_\_\_\_\_

Review: Phases of Matter

Directions: Use your notes, worksheets, lab and other resources to help you answer the following:

- 1) What is the kinetic theory of matter?
- 2) Which of the following models of particles show the correct arrangement of particles in a solid, liquid, and gas?(circle the letter)



3. Name and provide 5 examples of the fourth state of matter not listed in question #2.

Matching: Match the appropriate state of matter with each of the statements below.

Solid

Liquid

Gas

Plasma

- \_\_\_ 4. Has particles with low kinetic energy.
- \_\_\_ 5. Has particles with very, very little attraction for one another.
- \_\_\_ 6. Particles are close together but can move around one another.
- \_\_\_ 7. The motion of these particles is vibrational.
- \_\_\_ 8. Particles have great attraction for one another.
- \_\_\_ 9. Particles are very far apart.

- \_\_\_\_\_ 10. Particles are ionized and have electrical charges
- \_\_\_\_\_ 11. Has a definite volume and shape.
- \_\_\_\_\_ 12. Has indefinite volume and shape
- \_\_\_\_\_ 13. Has indefinite shape and definite volume
- \_\_\_\_\_ 14. When gas undergoes an exothermic process it turns to this.
- \_\_\_\_\_ 15. When a liquid undergoes an endothermic process it turns to this.

Directions: Fill in the blank the name of the phase change or other term relating to phase changes referred to in the statement.

16. \_\_\_\_\_ . Solid turns to gas
17. \_\_\_\_\_ . Gas turns to liquid
18. \_\_\_\_\_ Liquid turns to solid
19. \_\_\_\_\_ Liquid turns to gas
20. \_\_\_\_\_ Gas turns to solid
21. \_\_\_\_\_ Solid turns to liquid
22. \_\_\_\_\_ Liquid water does this at  $0^{\circ}\text{C}$  or  $32^{\circ}\text{F}$ .
23. \_\_\_\_\_ Liquid water does this at  $100^{\circ}\text{C}$  or  $212^{\circ}\text{F}$ .
24. \_\_\_\_\_ Heat released during a phase change is this type of process.
25. \_\_\_\_\_ Heat is added to cause a phase change is this type of process.

Directions: Short answer

26. What is happening at the two plateaus that can be found on a heating curve?